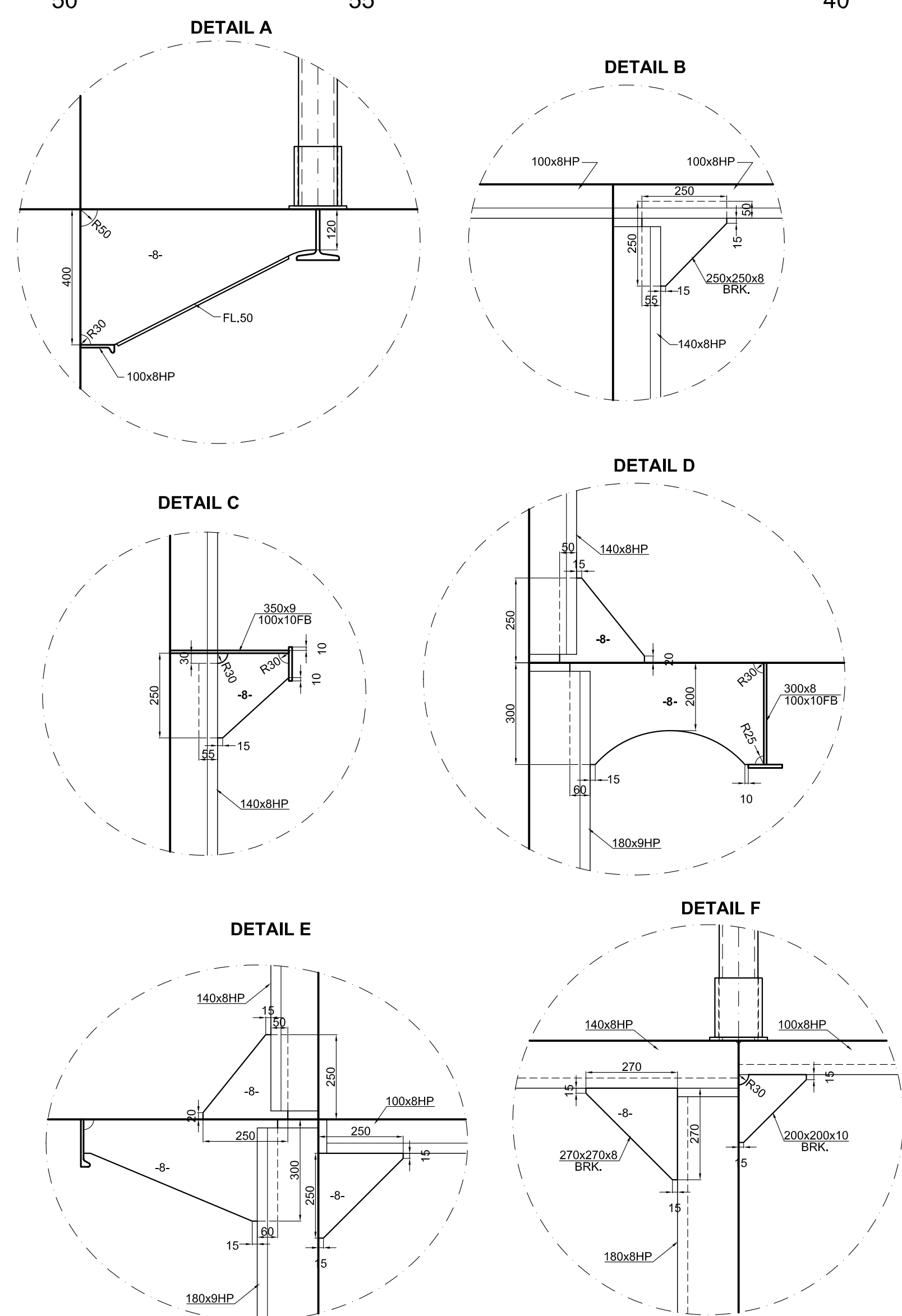
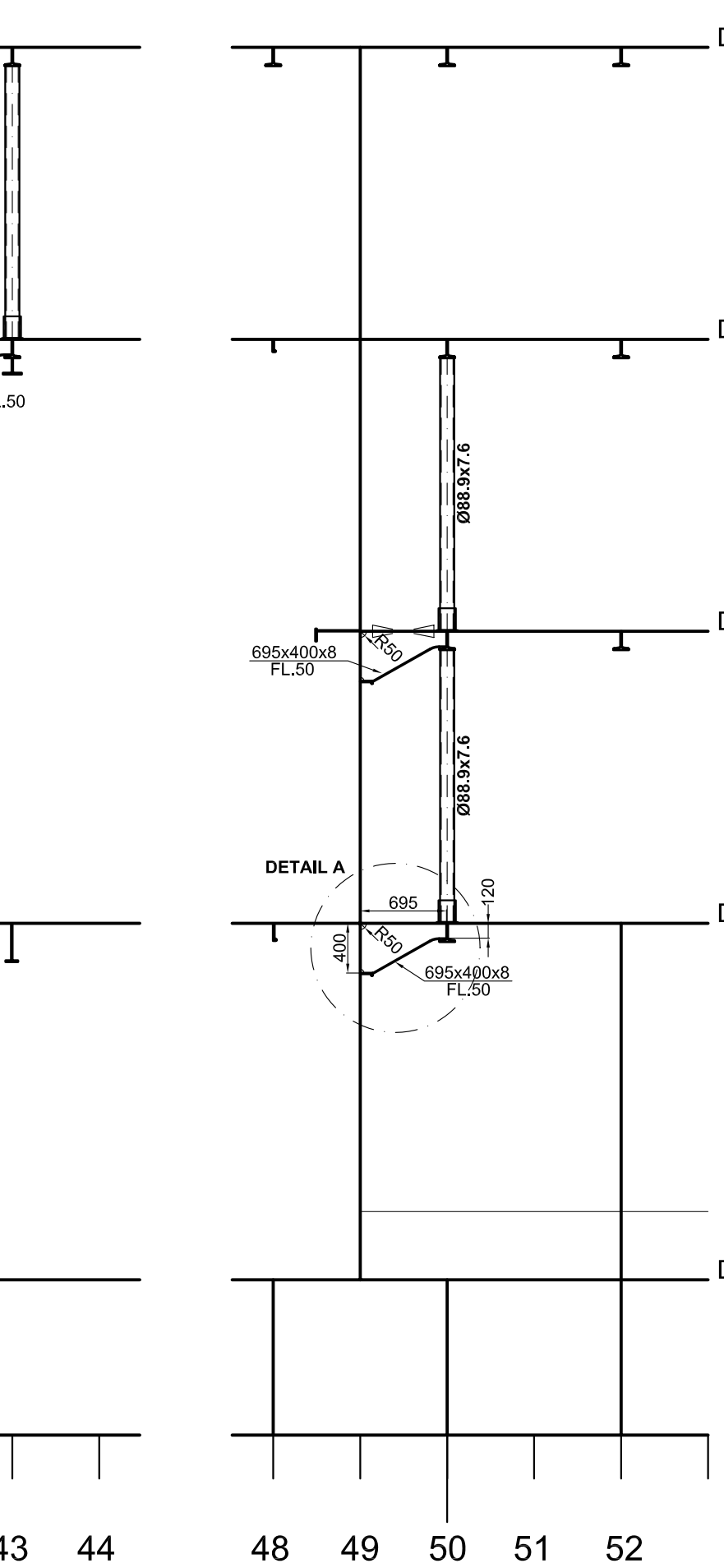


2558 FR. CL. (P/S)



MAIN PARTICULARS  
LENGTH OVERALL = 115.35 m.  
LENGTH BETW. P.P. = 108.00 m.  
BREADTH MOULDED = 17.90 m.  
DEPTH TO MAIN DECK = 8.80 m.  
DRAUGHT (SUMMER) = 6.871 m.  
IMO NO = 9003007  
CB = 0.683  
DISPLACEMENT = 9363 T

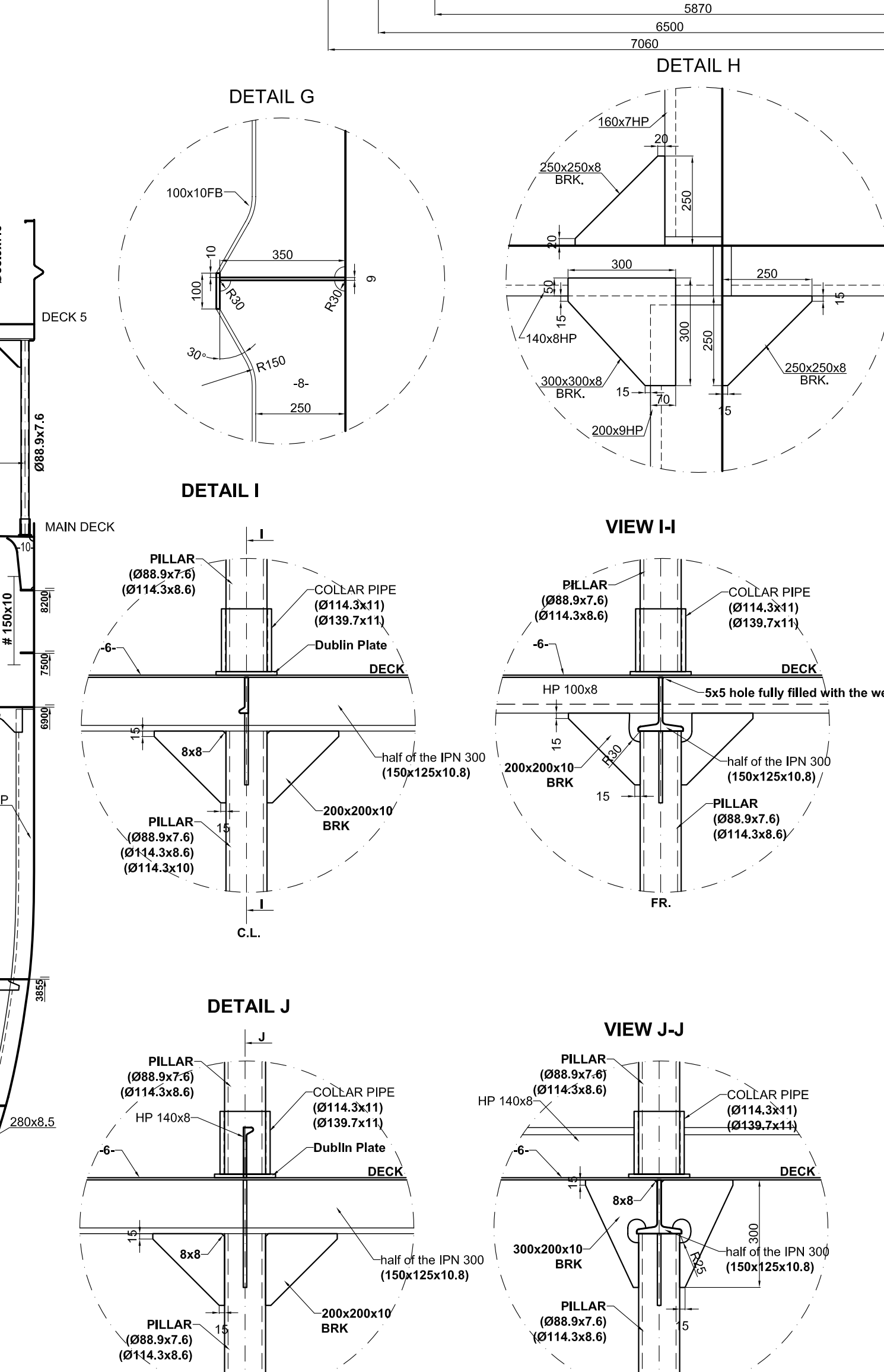
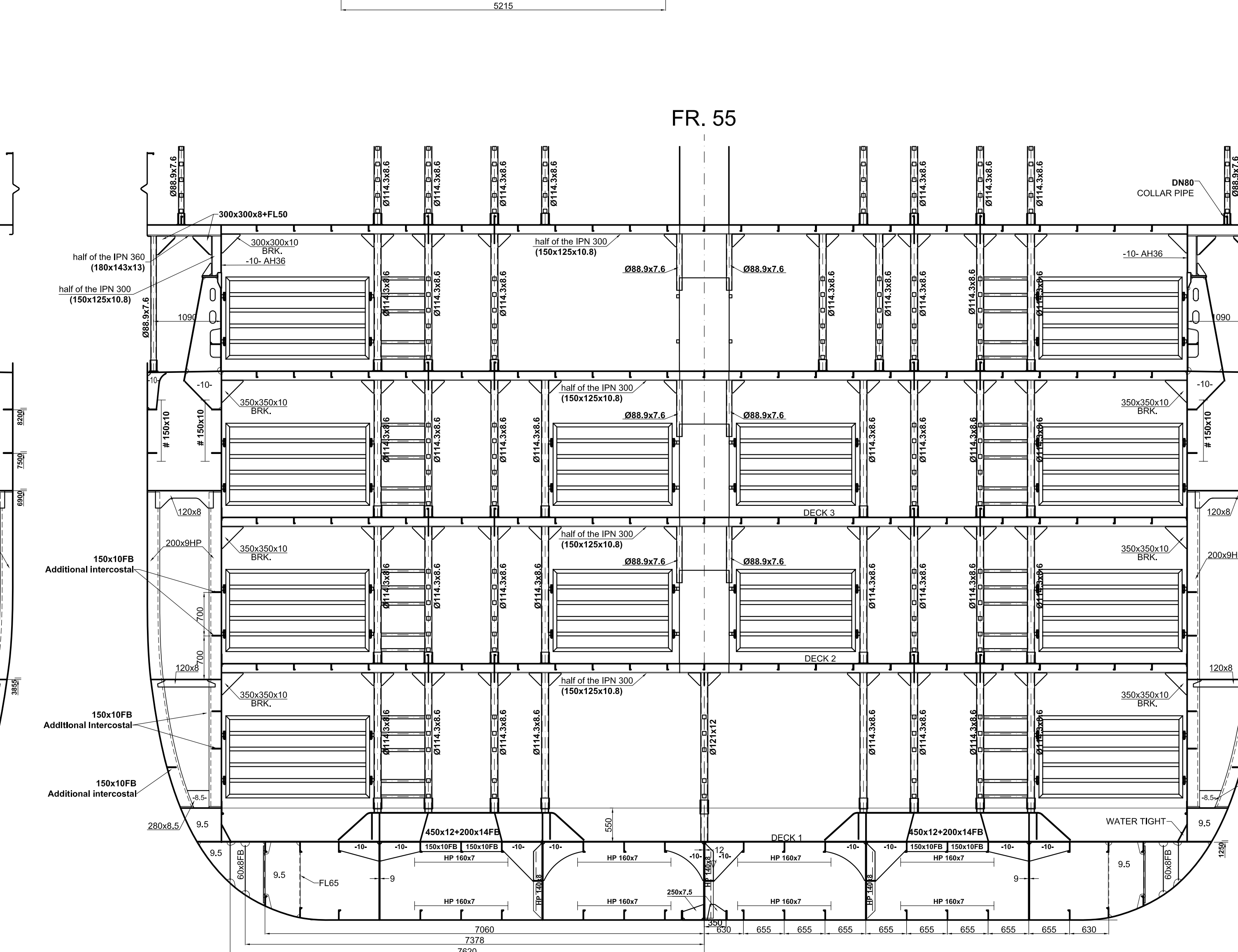
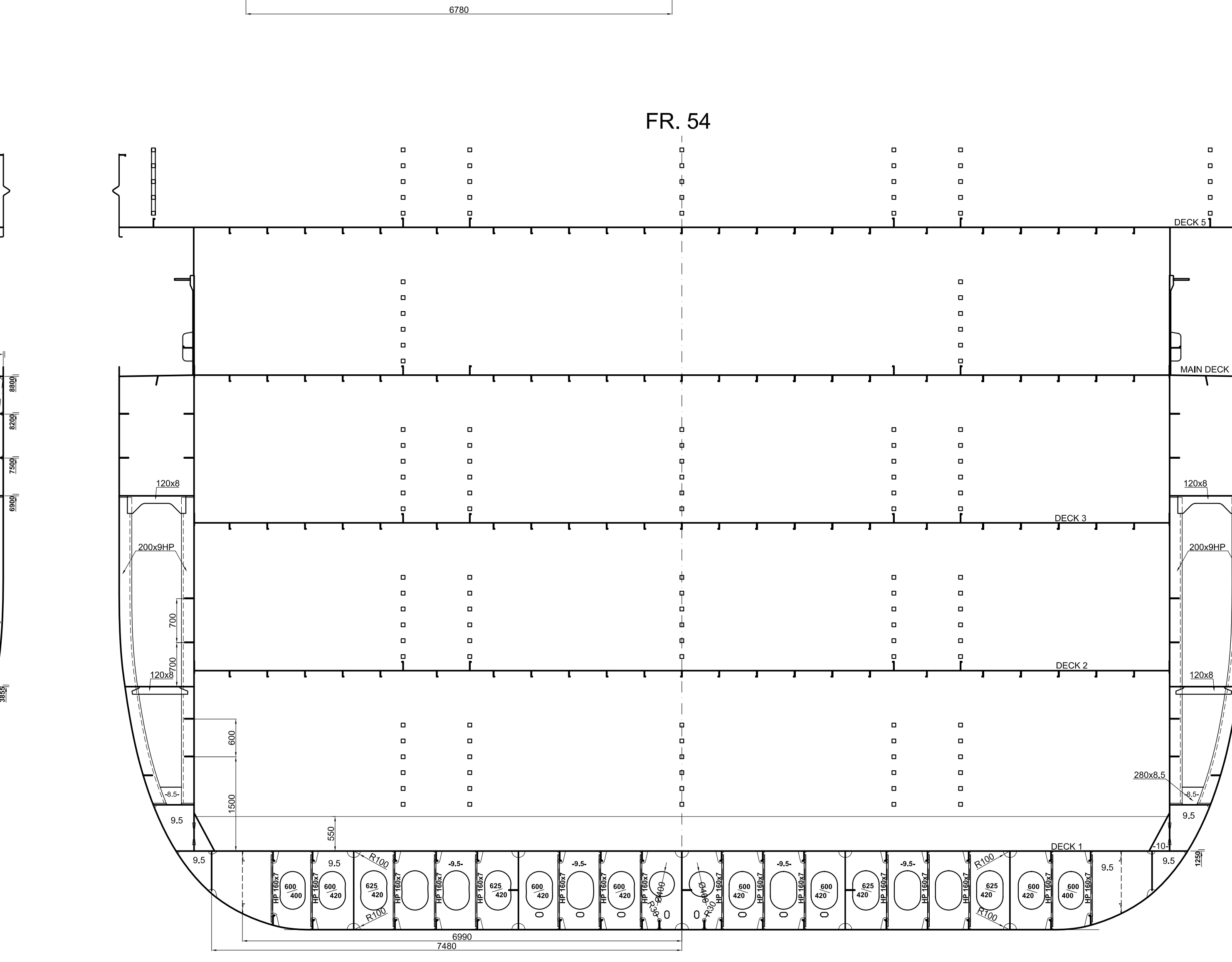
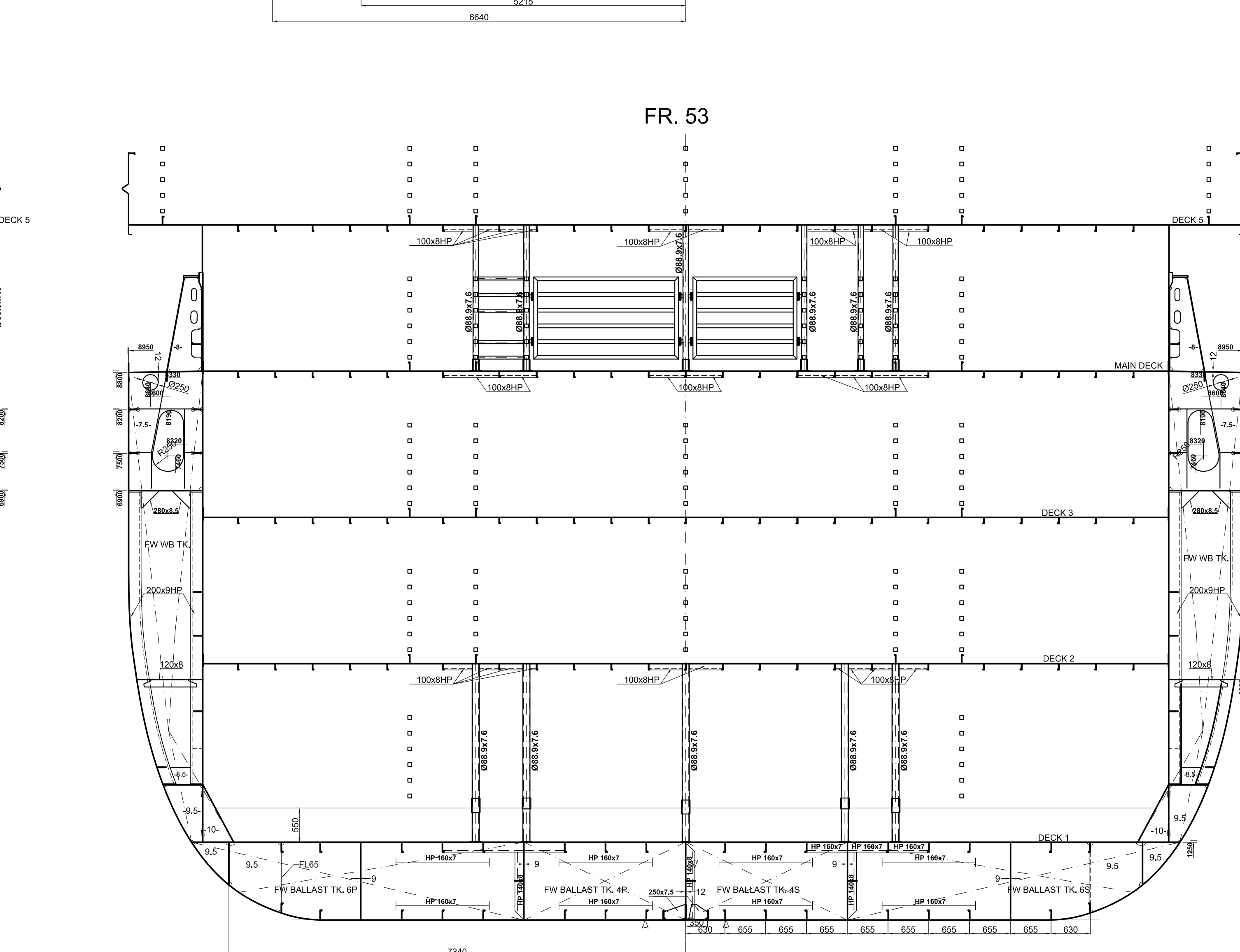
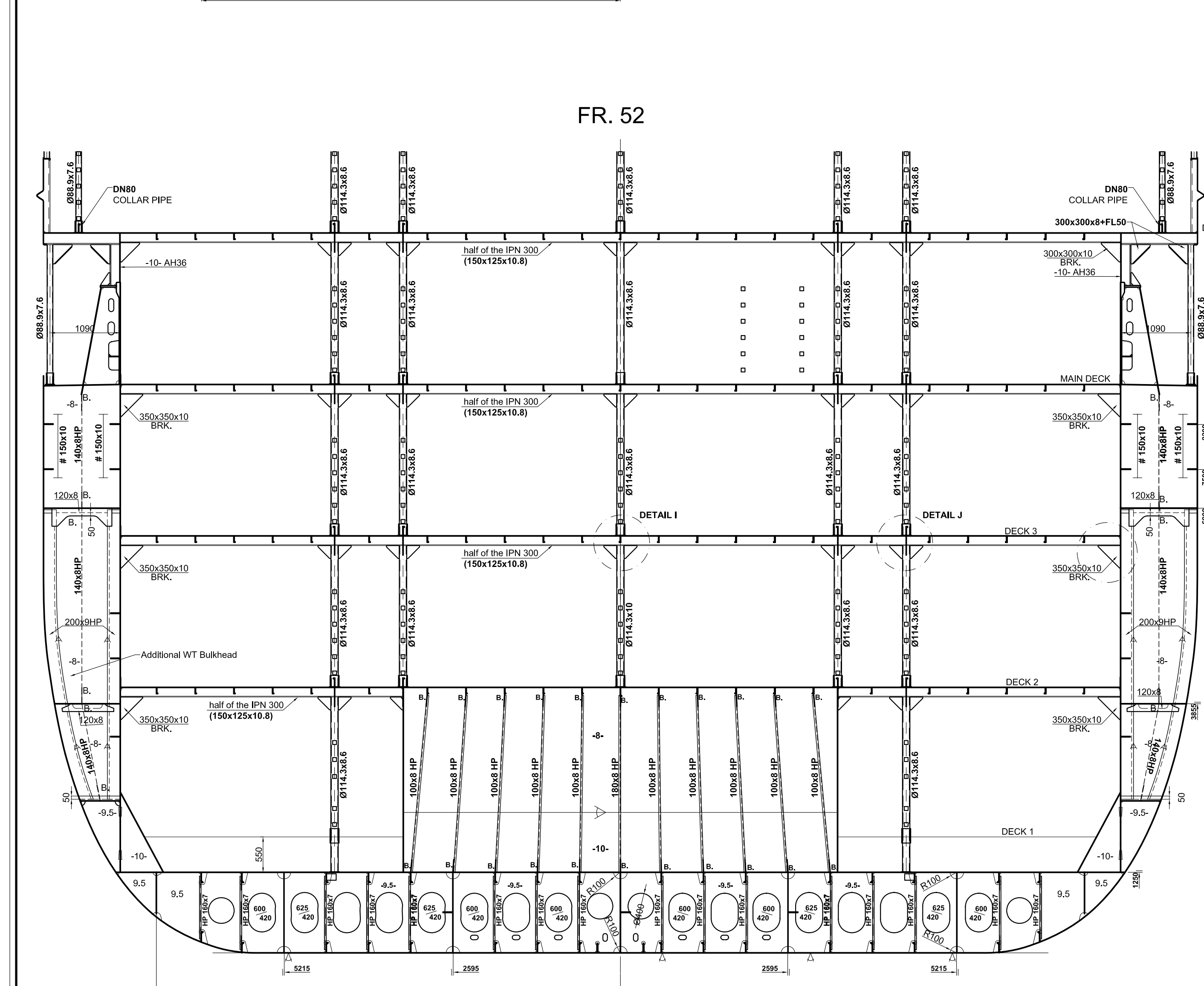
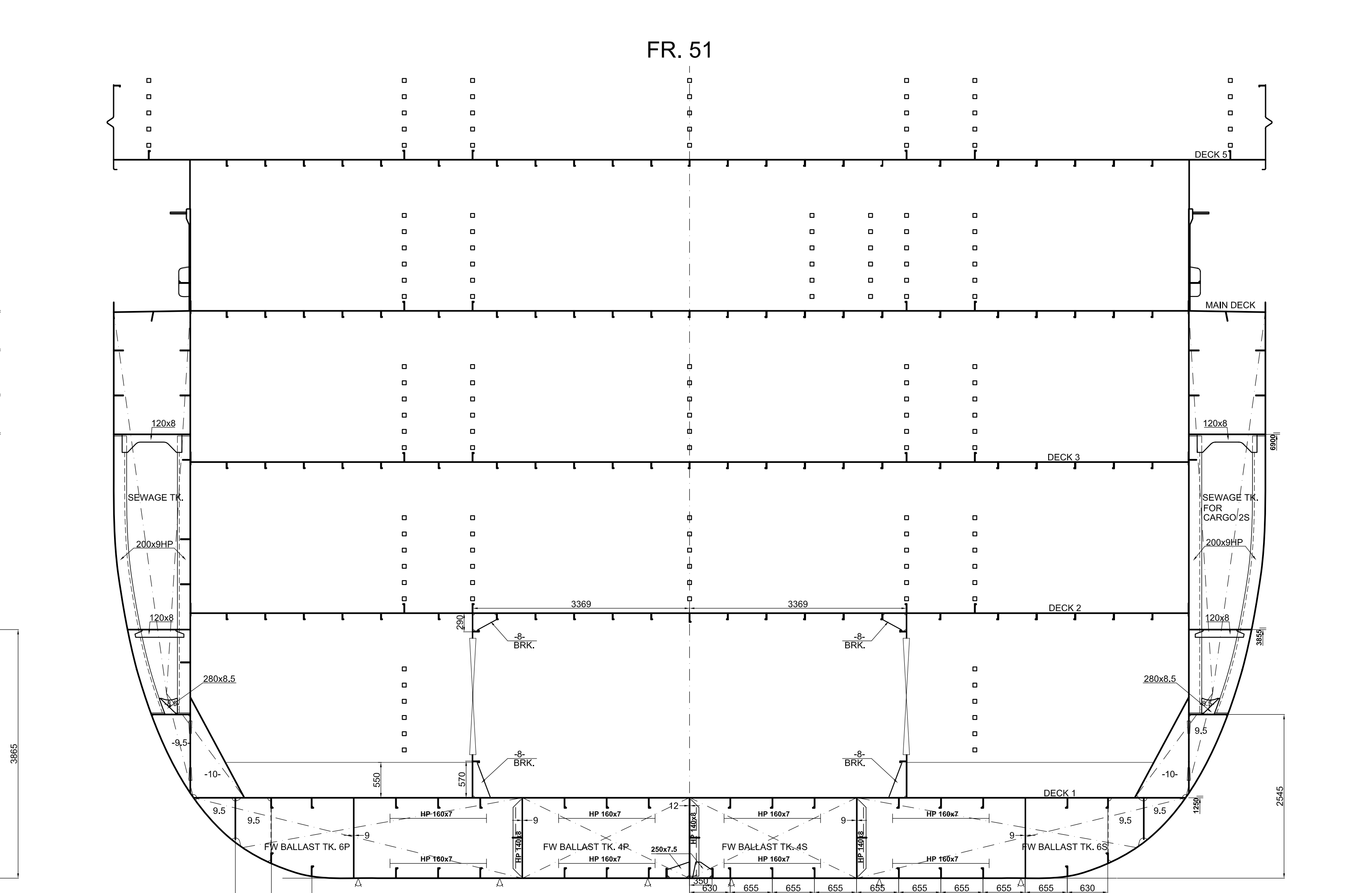
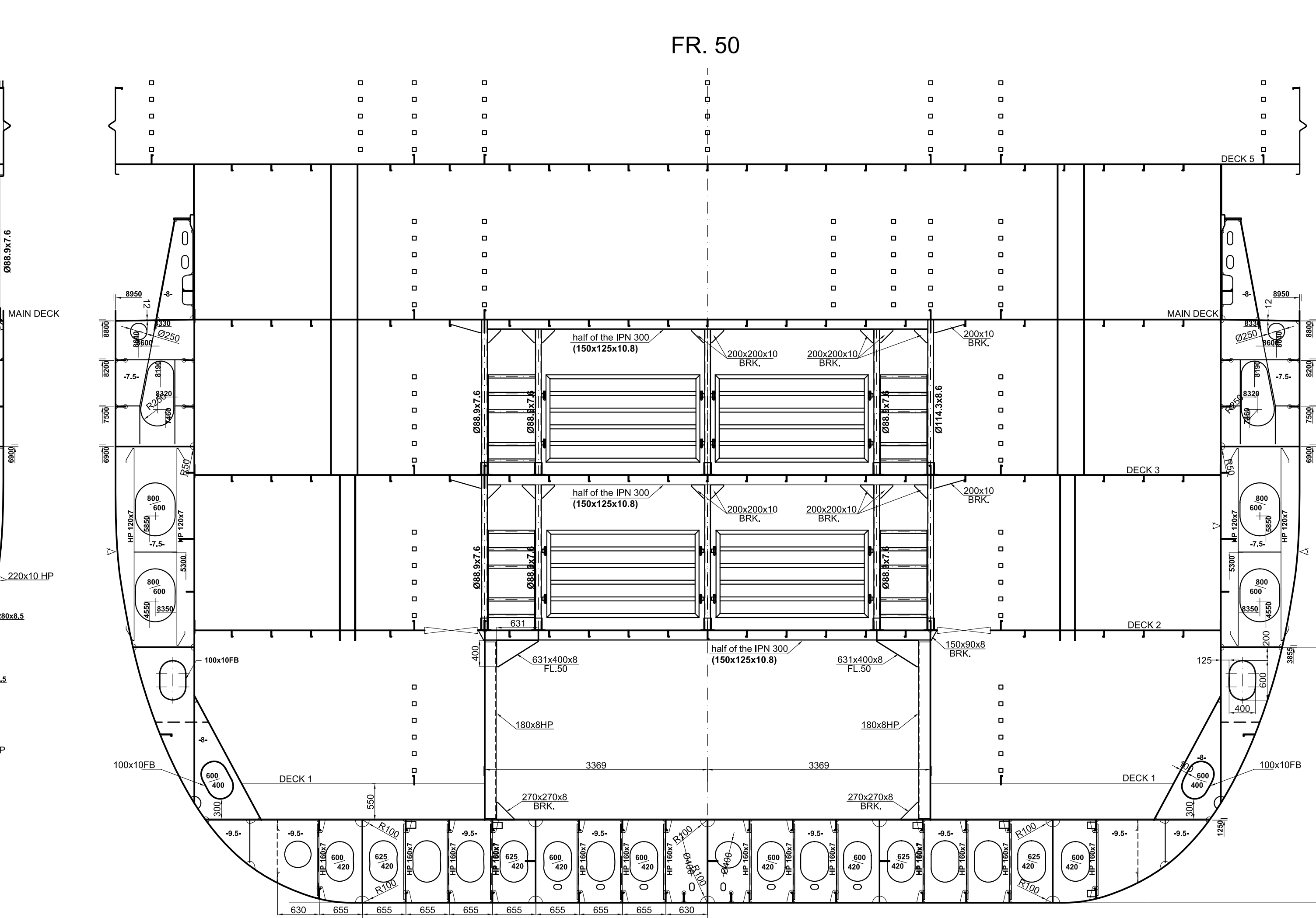
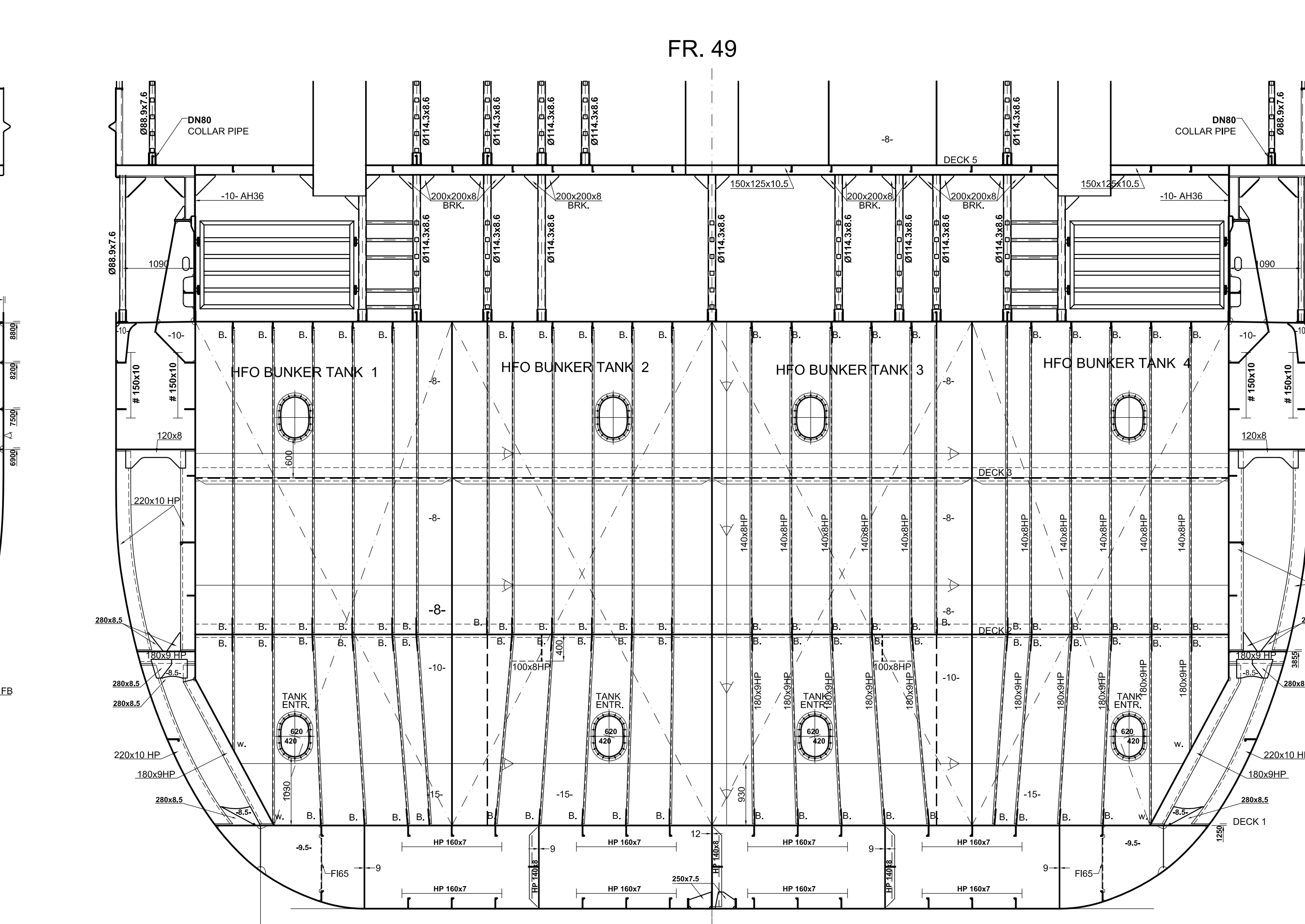
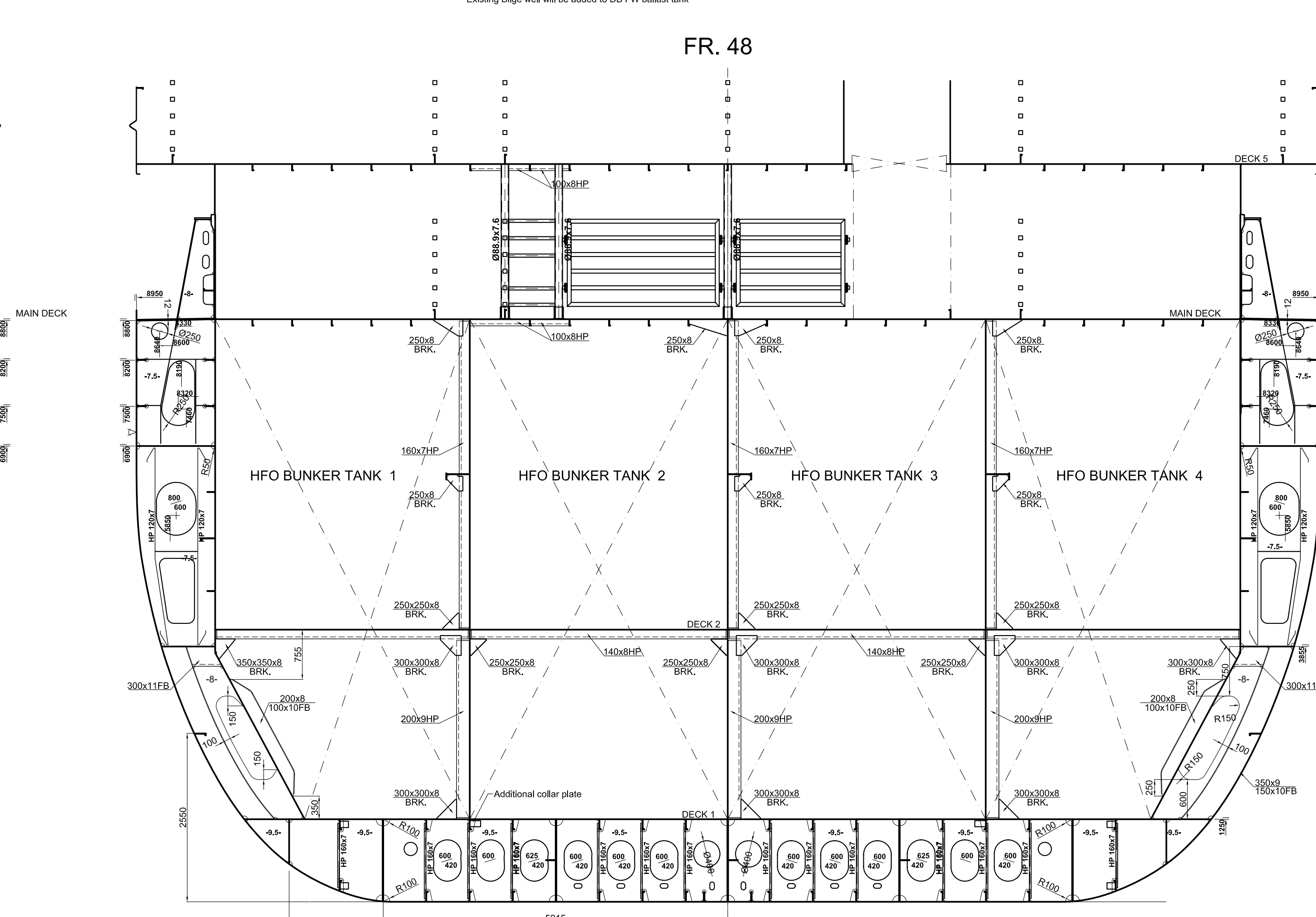
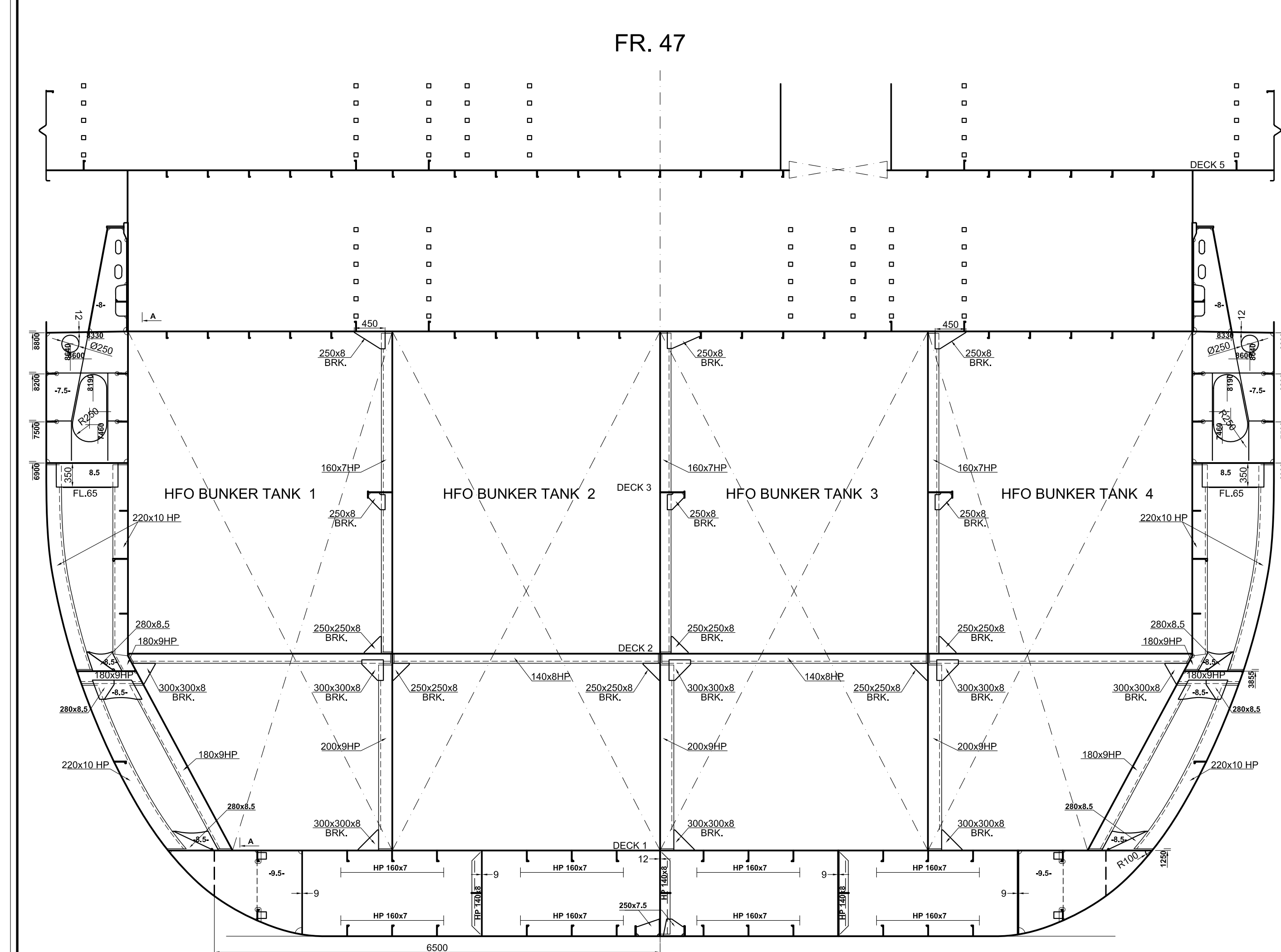
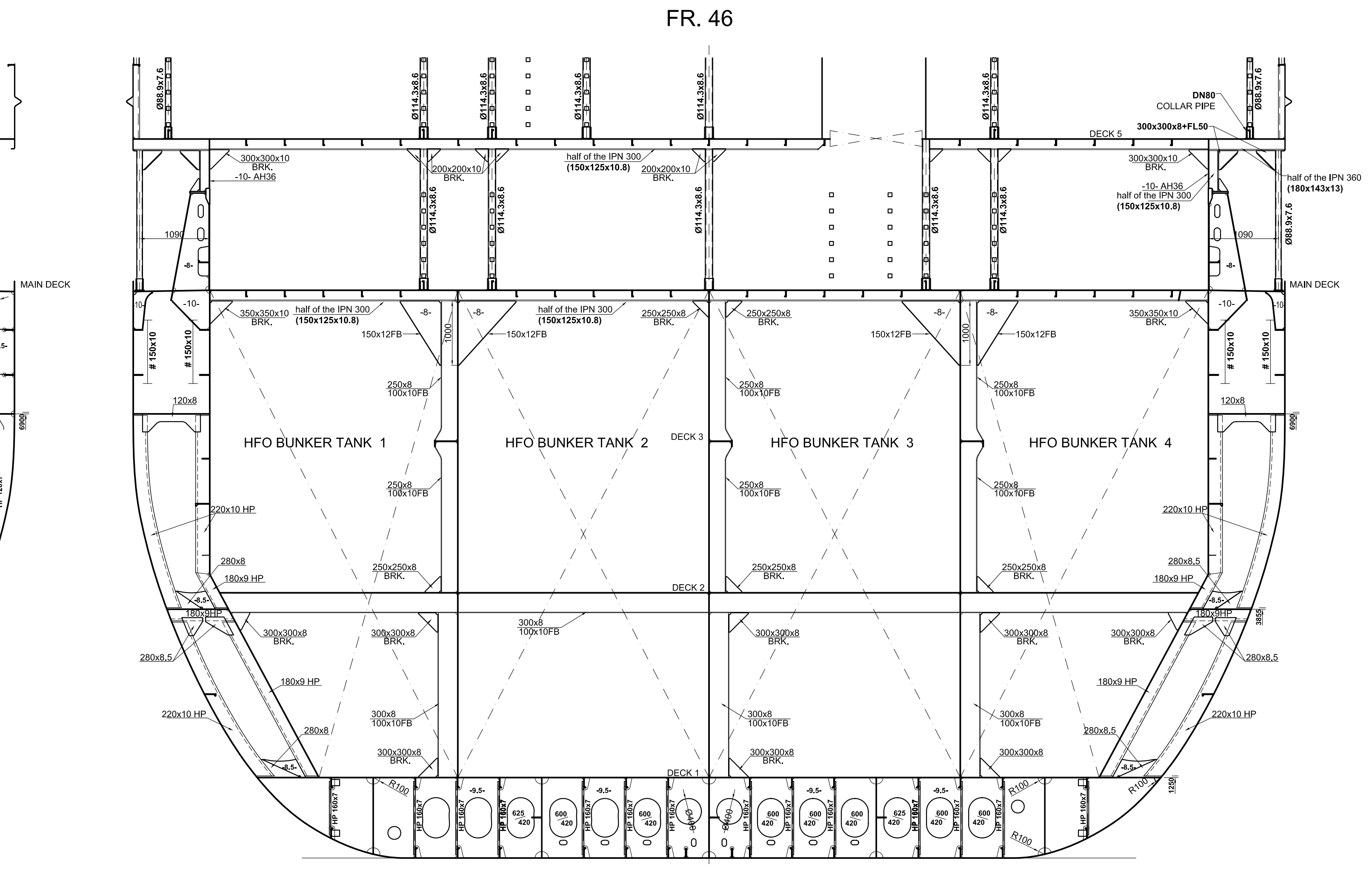
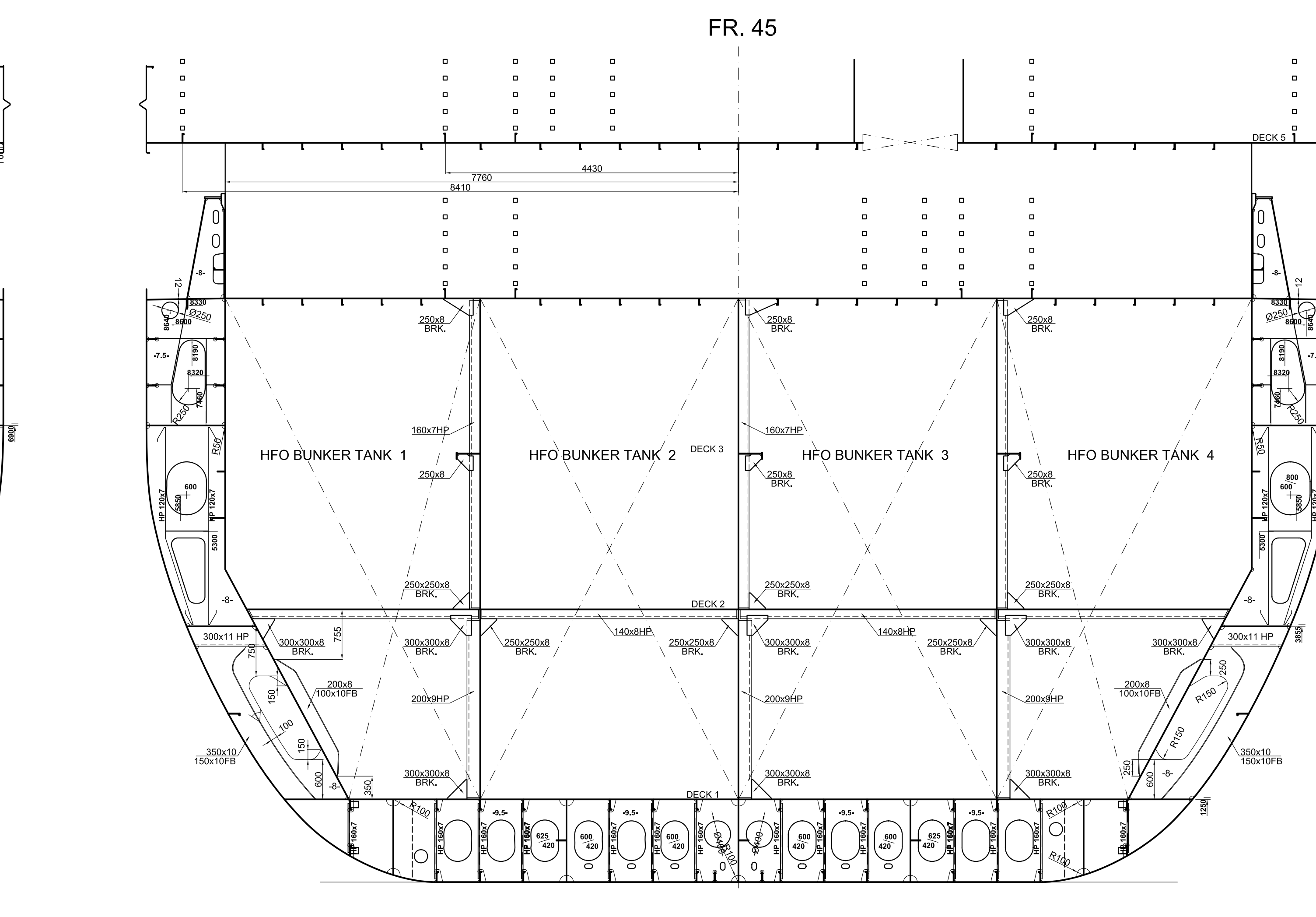
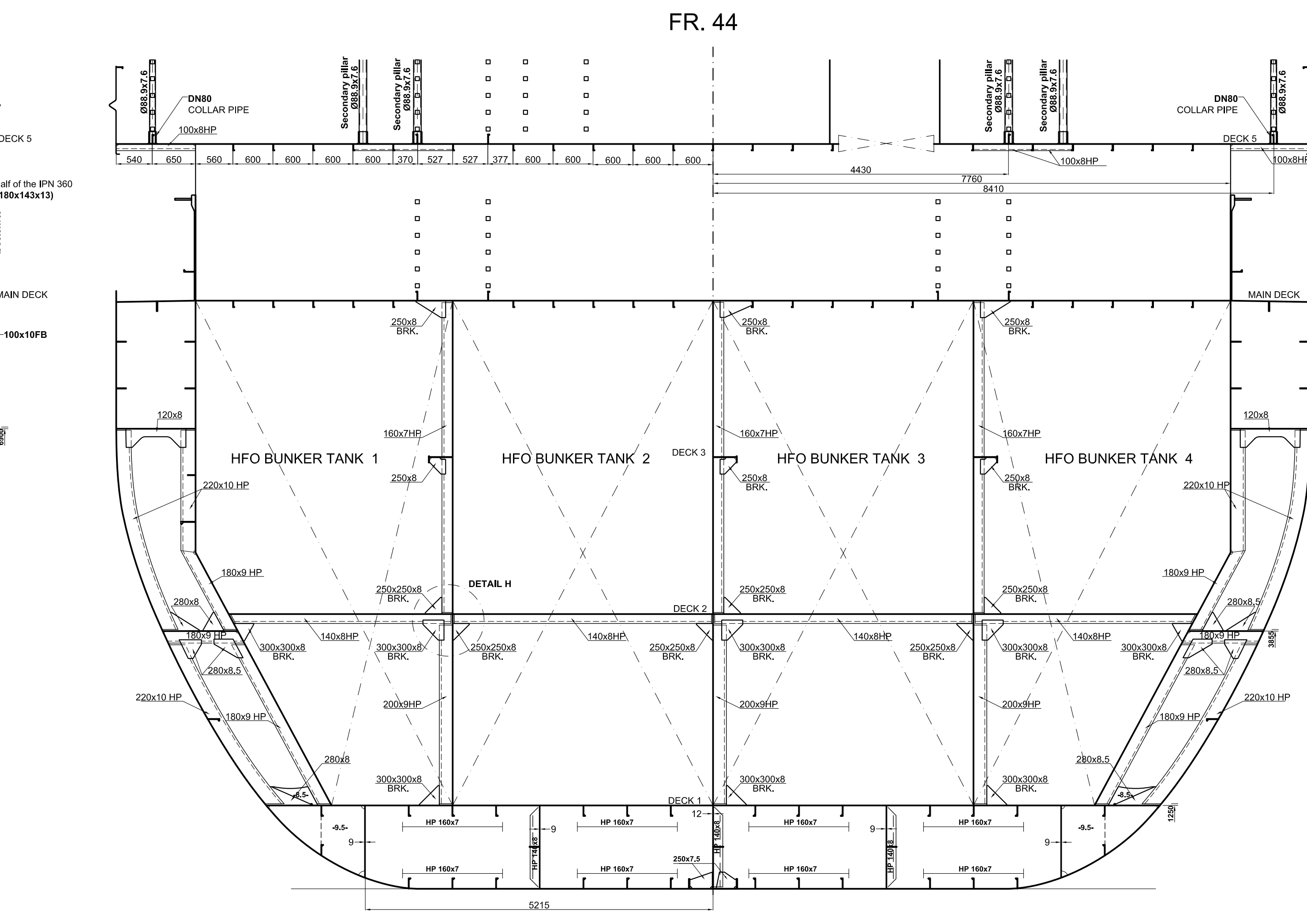
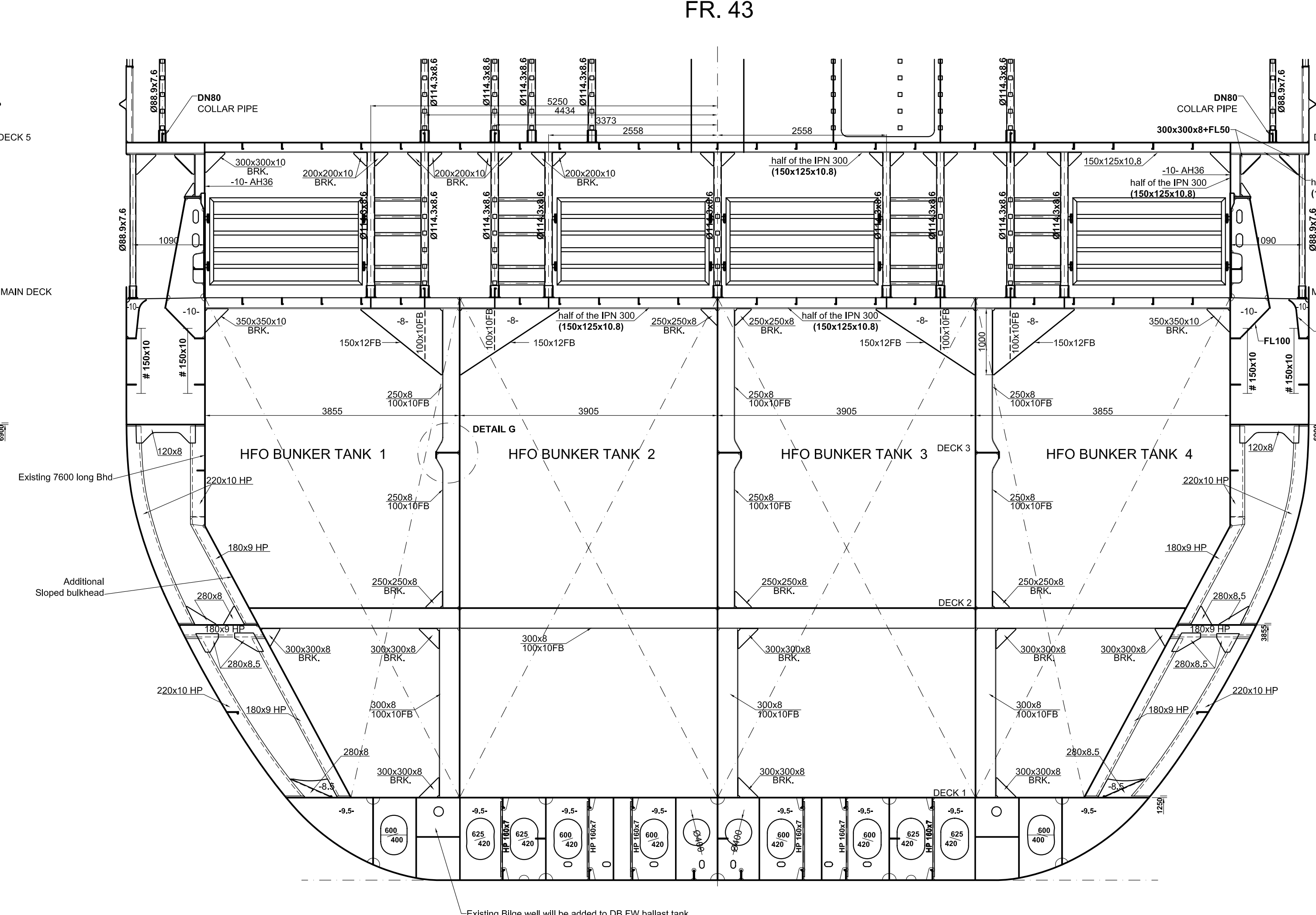
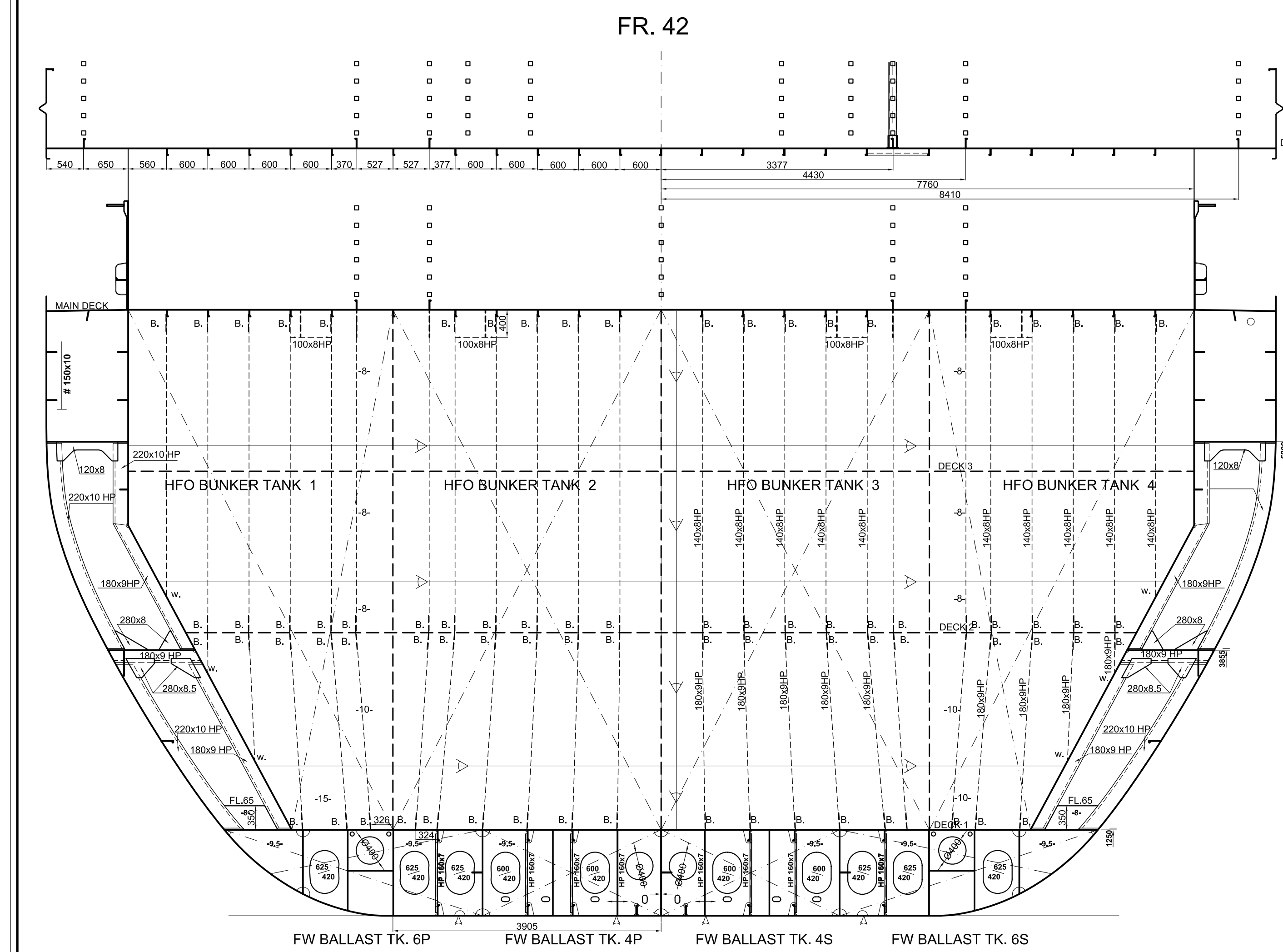
CLASS : BUREAU VERITAS : I + HULL + MACH, UNRESTRICTED NAVIGATION  
LIVE STOCK CARRIER, + AUT-UMS  
LIVE STOCK CARRIER RULES ACCORDING TO BV AND AMSA MARINE ORDERS PART 4  
CONCRECTION PROJECT FROM CONTAINER SHIP TO LIVE STOCK CARRIER  
Vessel is converted from Container Ship.

For details of existing parts not shown in this plan, please use original drawings with this plan.

NO.	DATE	REVISED BY	REVISION	CHECKED BY

MAVİ EGE		MAVİ EGE MÜHENDİSLİK LTD. STİ	
PROJECT:		LIVE STOCK CARRIER	
TITLE:		HOLD AFT CONSTRUCTION FR 42-55	
OWNER	TAMARA SHIPPING	SHIPYARD	SEFINE SHIPYARD / YALOVA / TURKEY
DESIGNED BY	GÖKHAN GÖKE		
CAD/C&E	HÜRRİM ALTINRİLEK		
CONTROL	RAZİYE SABAN GÖKE		
HULL NO	CLASS	DATE	SCALE
-	B.V.	22.03.2013	1/50
			DRWN
			LSC1-C-06
			SHEET
			01/02





**MAIN PARTICULARS**

LENGTH OVERALL	= 115.35 m.
LENGTH BTW. P.P.	= 108.00 m.
BREADTH MAX. DEED	= 17.90 m.
DEPTH TO MAIN DECK	= 8.80 m.
DRAUGHT (SUMMER)	= 6.571 m.
IMO NO.	= 9083067
CB	= 0.683
DISPLACEMENT	= 9563 T

CLASS - BUREAU VERITAS : 1 - HULL + MACH. UNRESTRICTED NAVIGATION  
LIVE STOCK CARRIER. - AUT-UMS

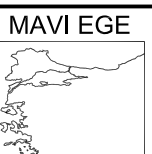
LIVE STOCK CARRIER RULES ACCORDING TO BV AND AMSA MARINE ORDERS PART 4

CONSTRUCTION PROJECT FROM CONTAINER SHIP TO LIVE STOCK CARRIER  
Vessel is converted from Container ship

For details of existing parts not shown in this plan, please use original drawings with this plan.

NO.	DATE	REVISED BY	REVISION	CHECKED BY	



**MAVI EGE MÜHÜRLENDİĞİ LTI STI**

POSTNÖR BAŞLI TUNÇ KARACIOĞLU  
TUGLA İSTANBUL - TÜRKİYE  
Tel : PAX : +90 212 446 48 50 - +90 212 392 31 84  
Web page : www.mavi-egge.net e-mail : bcs@mavi-egge.net

**PROJECT:**

## LIVE STOCK CARRIER

**TITLE:**

## HOLD FACTORY CONSTRUCTION FR 42-55

OWNER	TAMARA SHIPPING	SHIPYARD	SIFNE SHIPYARD / YALOVA / TURKEY
DESIGNED BY	GÖKHAN ÖKME	CAD/CAM	HÜKRREM ALTINBEKEL
CONTROL	RAZYZE SABAN OKAL		